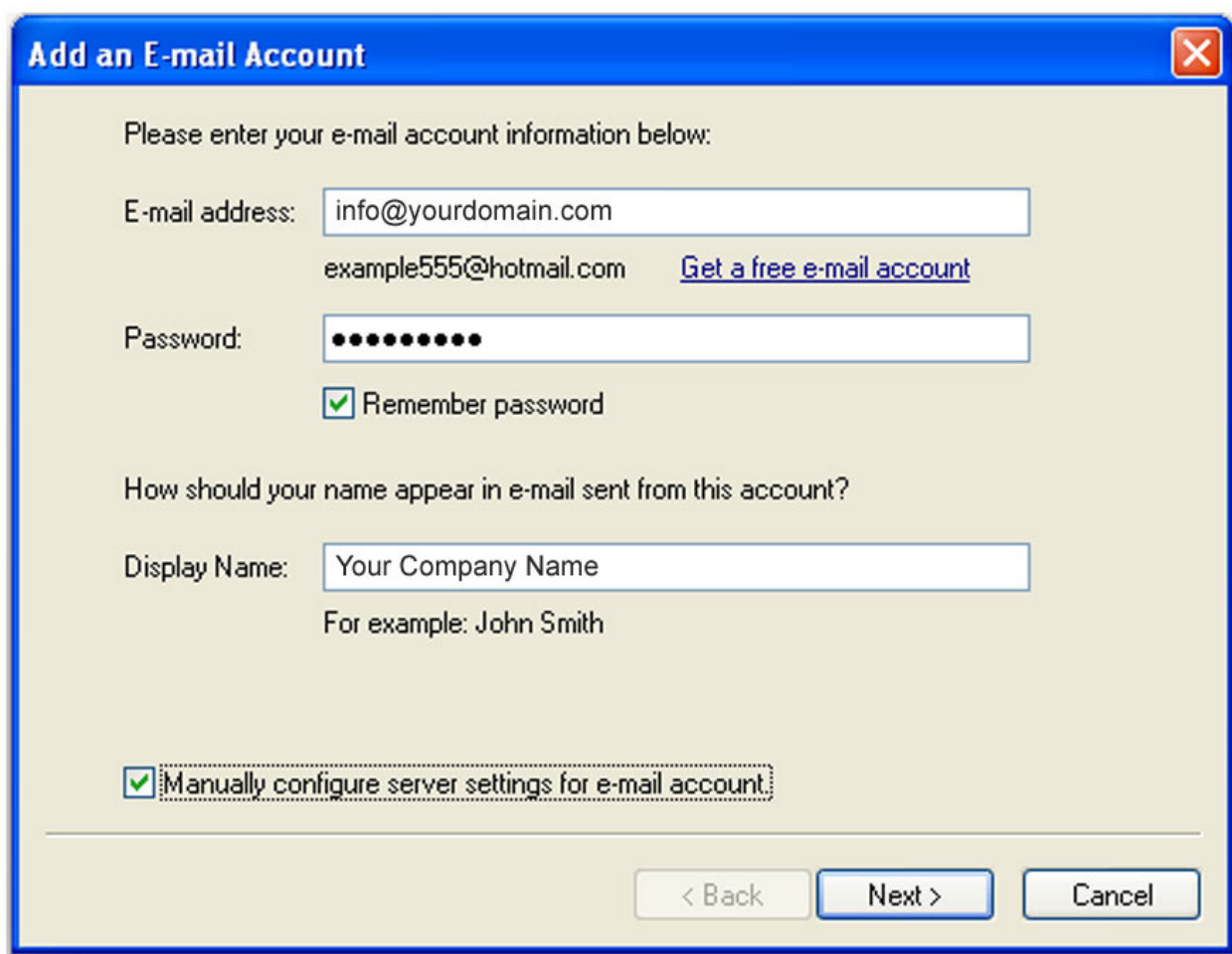


1. EOpen Windows Live Mail.
2. You will be prompted to create an email account.



Add an E-mail Account ✕

Please enter your e-mail account information below:

E-mail address:
example555@hotmail.com [Get a free e-mail account](#)

Password:

Remember password

How should your name appear in e-mail sent from this account?

Display Name:
For example: John Smith

Manually configure server settings for e-mail account.

3. Next, enter your Account Settings.

Add an E-mail Account

[Where can I find my e-mail server information?](#)

Incoming Server Information

My incoming mail server is a **POP3** server.

Incoming server: Port:

This server requires a secure connection (SSL)

Log on using: **Clear text authentication**

Login ID (if different from e-mail address):

Outgoing Server Information

Outgoing server: Port:

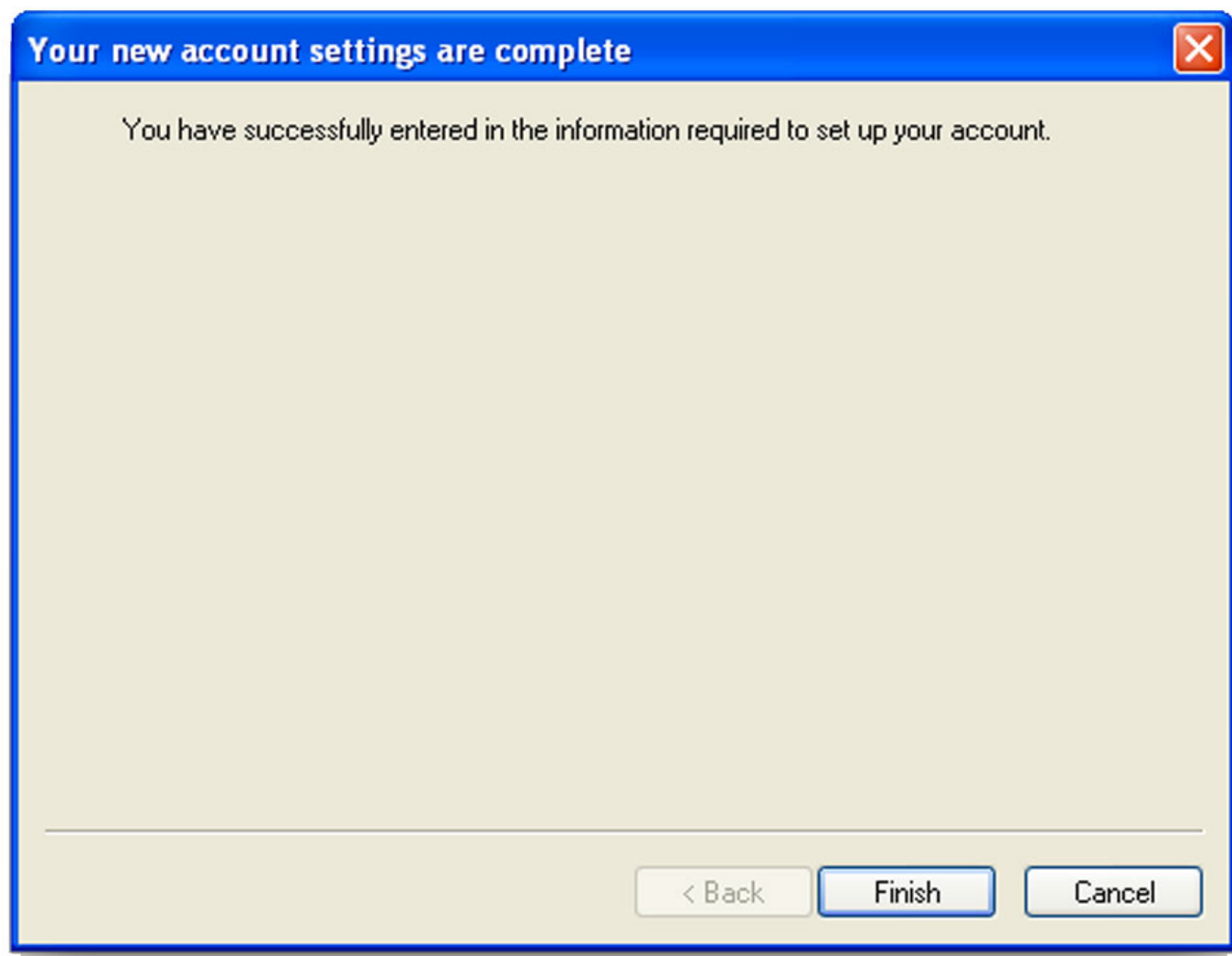
This server requires a secure connection (SSL)

My outgoing server requires authentication

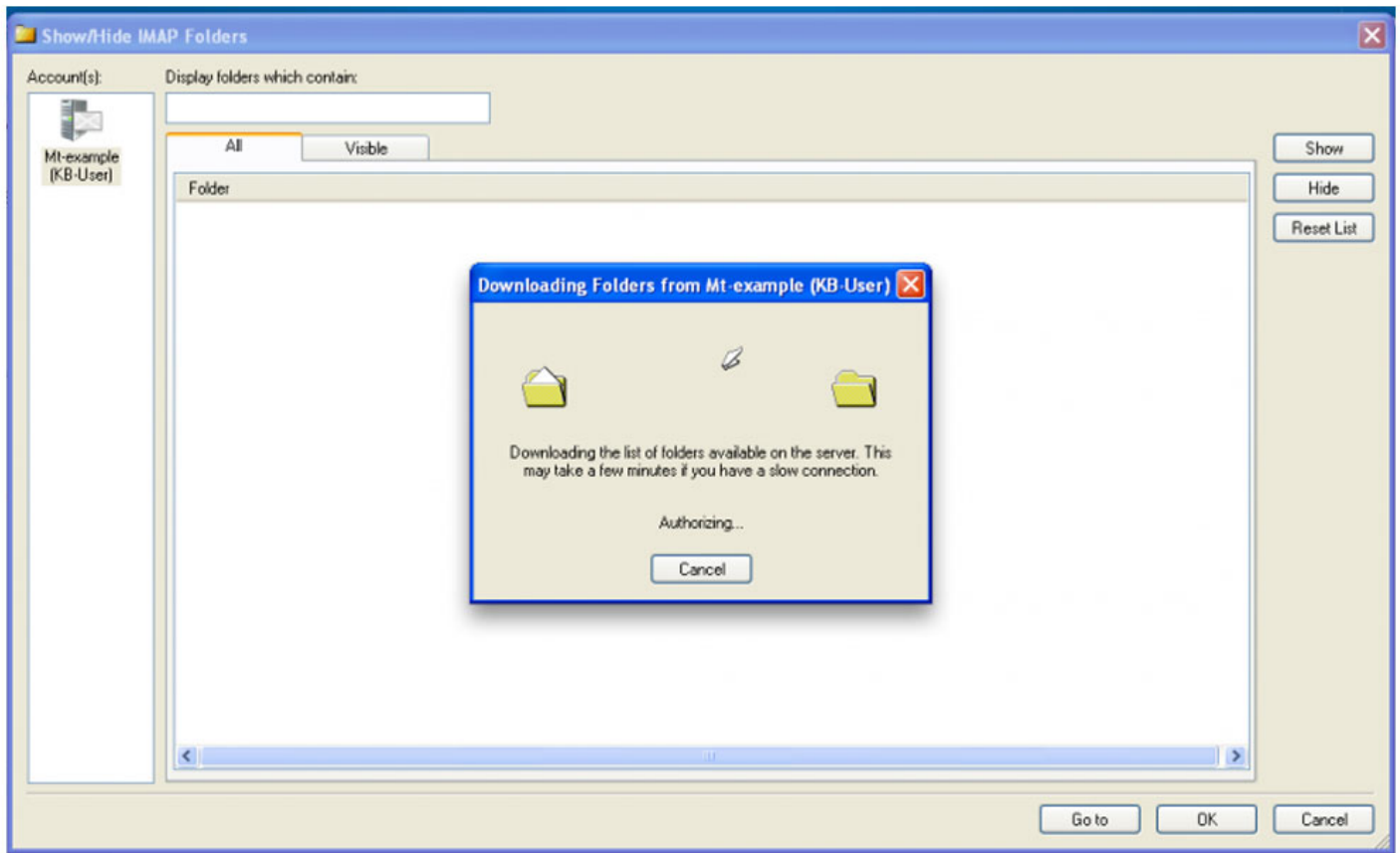
< Back Next > Cancel

- My incoming mail server is a (select IMAP or POP) server. We suggest IMAP. Learn more here.
- Incoming server: hostspectrum.net mail.info@yourdomain.com
- Port: 995 for POP3
- This server requires a secure connection (SSL) should be unchecked.
- Log on using: Clear text authentication.
- Login ID: KB-User@mt-example.com
- Outgoing Server: hostspectrum.net mail.info@yourdomain.com
- Port: 465
- This server requires a secure connection (SSL) should be unchecked.
- Please check the box for My outgoing server requires authentication.

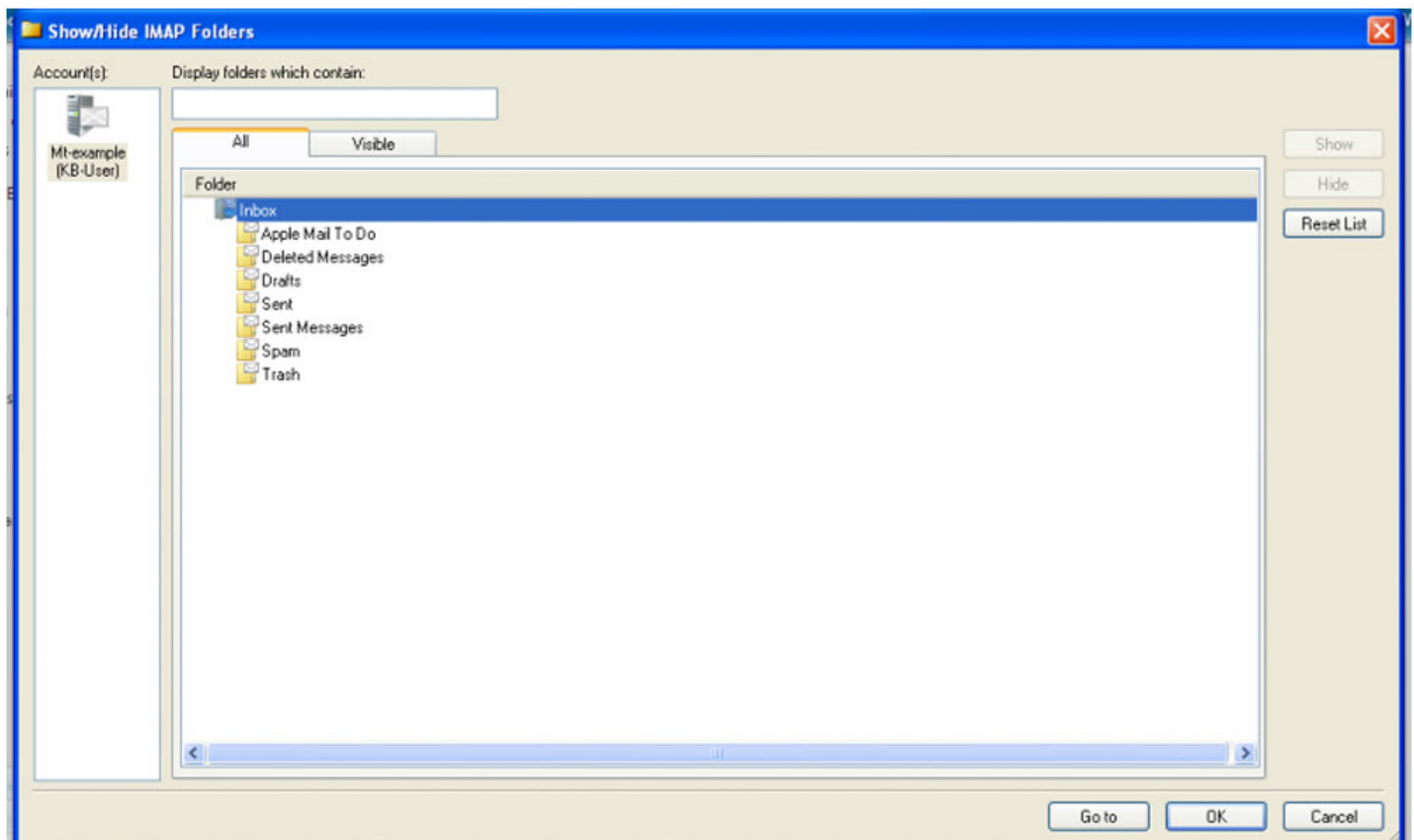
4. You should now get a success message.
Please continue:



5. You will now get a message that your folders are downloading:



6. Please verify that your folders are correct, then click OK:



7. You should now be able to send and receive emails:

